

Only

FONTAINE®

Gives You the TechLock® System Advantage

Rebuild



**ASSEMBLY, DISASSEMBLY
& TROUBLESHOOTING
INSTRUCTIONS FOR
CUSTOM DUTY SERIES**

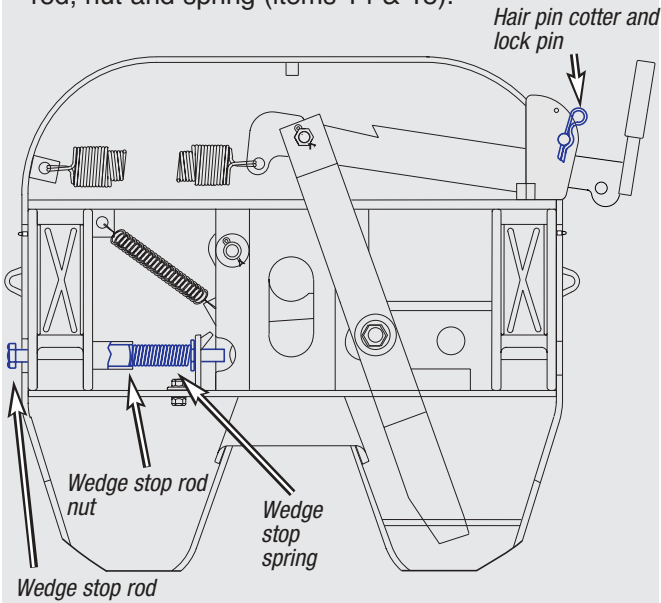


CUSTOM DUTY REBUILD DISASSEMBLY

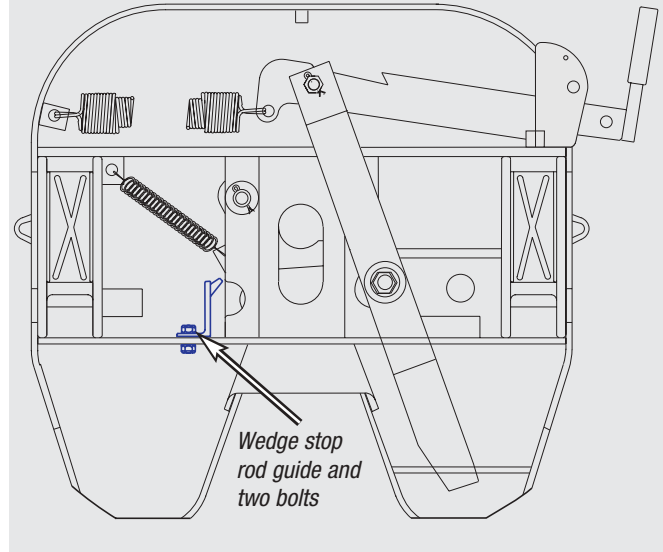
Degrease fifth wheel before installing new parts.

Refer to exploded view of assembly on page 7 to identify item numbers and parts

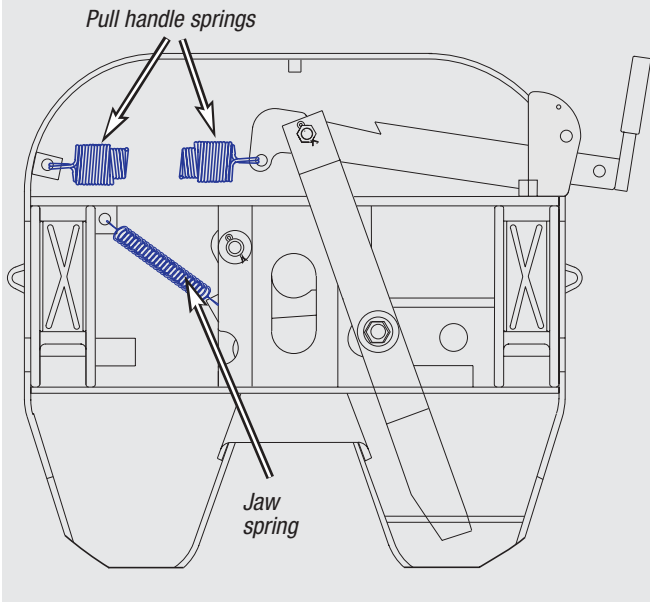
1 Set the fifth wheel in a locked position. Remove the hair pin cotter and lock pin (items 25 & 26) and remove the wedge stop rod, nut and spring (items 14 & 15).



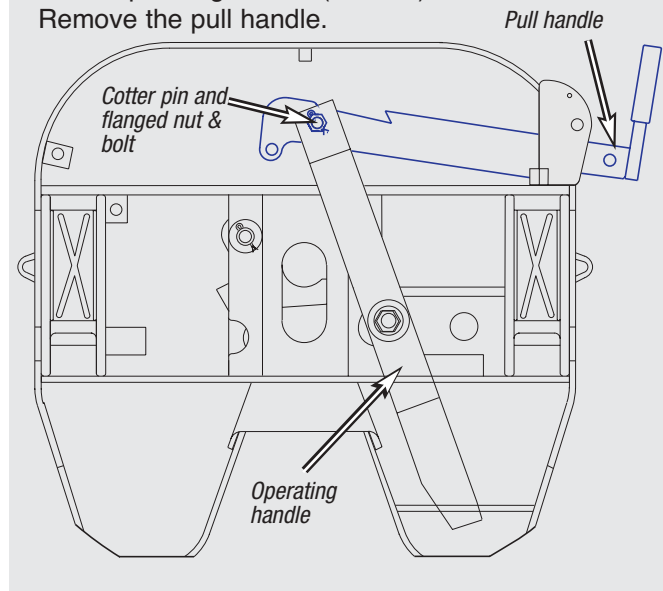
2 Remove the wedge stop rod guide (item 2) from rear cross member (2 bolt assemblies, items 20 & 22).



3 Remove the jaw spring (item 4) and pull handle springs (item 3) (smaller spring encased in larger spring to act as one spring).



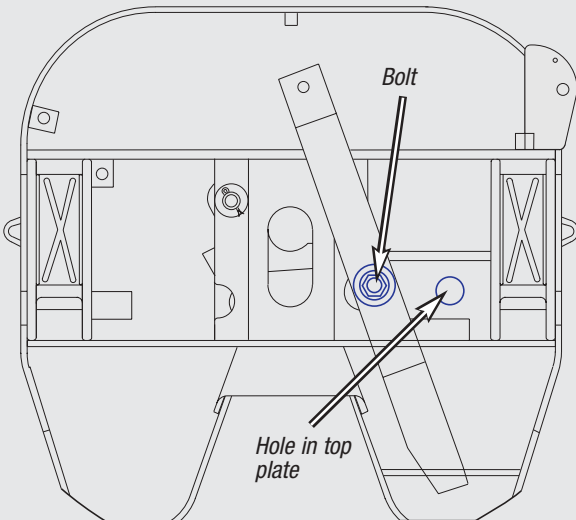
4 Remove the hex head flanged bolt and flanged nut assembly (items 10, 13 & 21) which secures the pull handle (item 18) to the operating handle (item 19). Remove the pull handle.



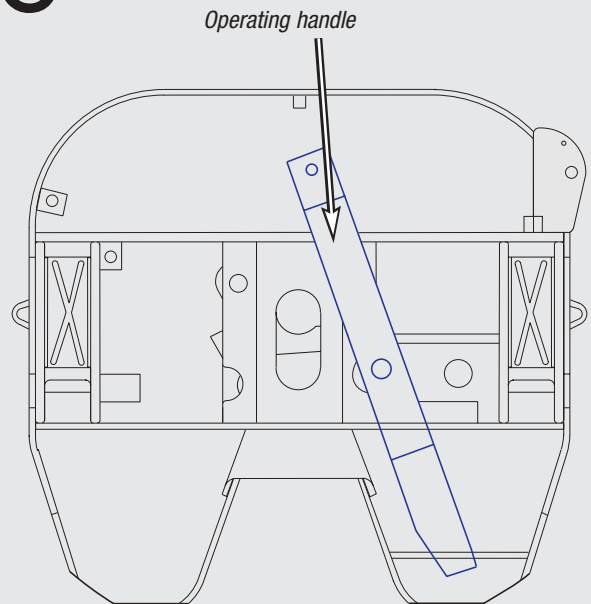
CUSTOM DUTY REBUILD DISASSEMBLY

Refer to exploded view of assembly on page 7 to identify item numbers and parts

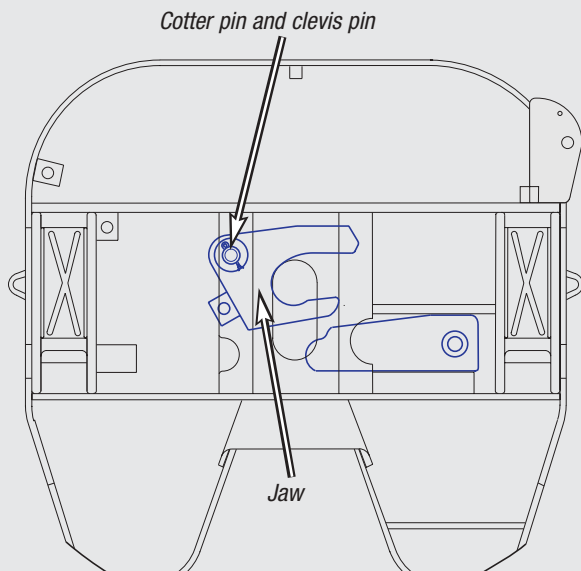
- 5** Remove the flat head socket assembly (items 5, 6, 7, & 8) which attaches the operating handle to the wedge (item 1). Position the operating handle over the hole in top plate to reach the socket from the other side.



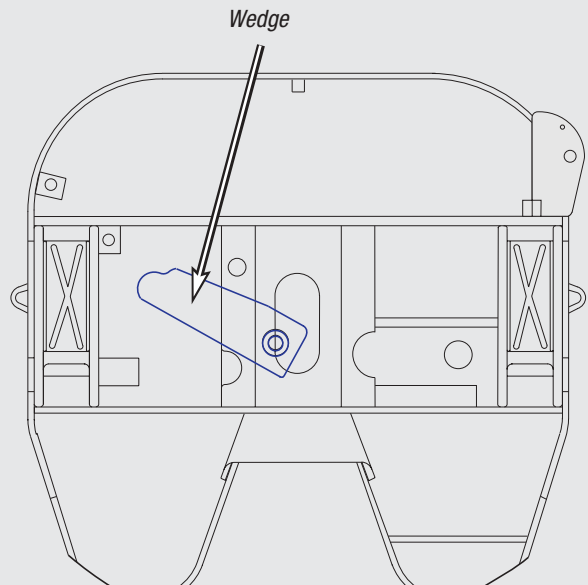
- 6** Remove the operating handle.



- 7** Remove the clevis pin assembly (items 9, 11, & 12) that secures the jaw (item 1). Remove the jaw.



- 8** Remove the wedge from the wheel.



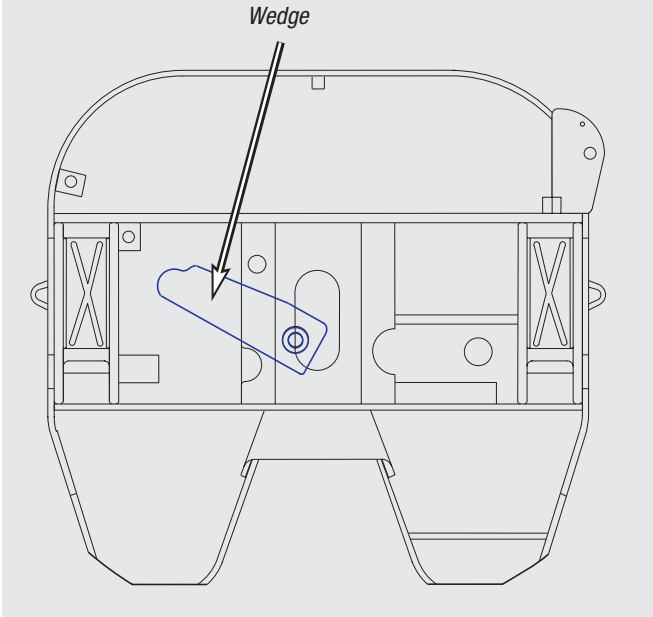
Discard old attaching hardware – Do not reuse!

CUSTOM DUTY REBUILD ASSEMBLY

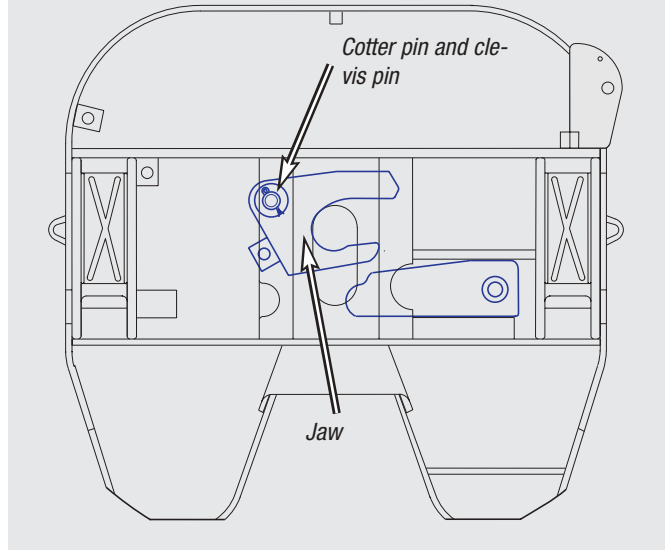
Adequate lubrication should be used.

Before rebuilding the assembly, check to make sure that there are no cracks in the cross members or other components. Also check bracket pin holes to ensure they are not worn oversize (pins should fit snugly).

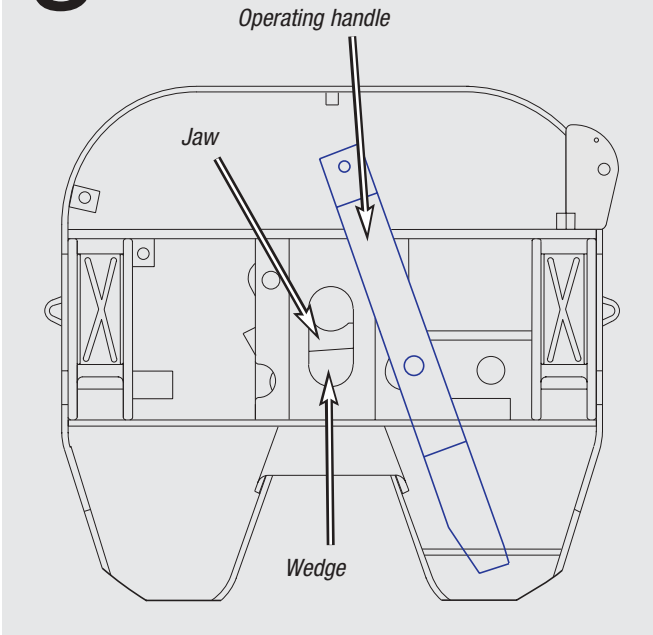
1 Insert the wedge into the wheel – leave room for the jaw when it is inserted.



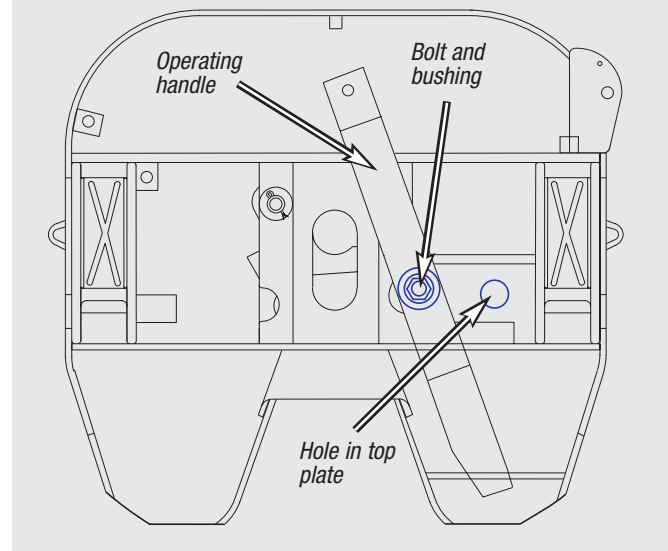
2 Insert the jaw and rotate to closed position. Insert a new clevis pin (item 12) through the hole in the top plate then through the jaw. Attach the washer (item 9) and secure with cotter pin (item 11).



3 Move the wedge in behind the jaw and insert the operating handle into the wheel.



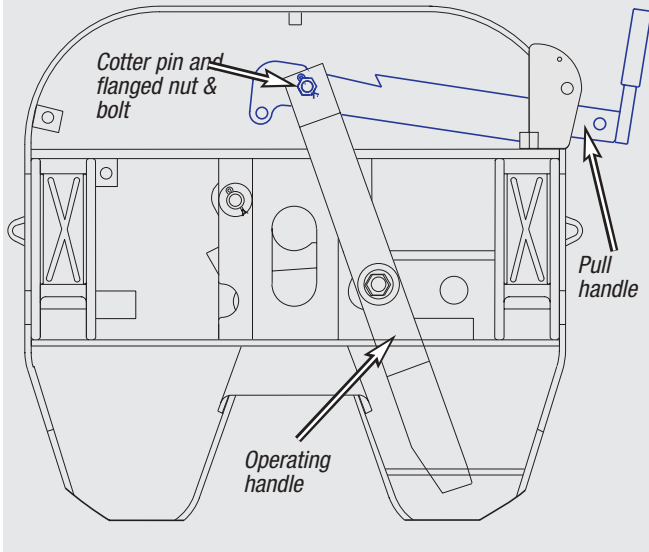
4 Attach the operating handle to the wedge assembly using a new socket bolt assembly (items 5, 6, 7, & 8). Position the operating handle over the hole in top plate to reach the socket from the other side.



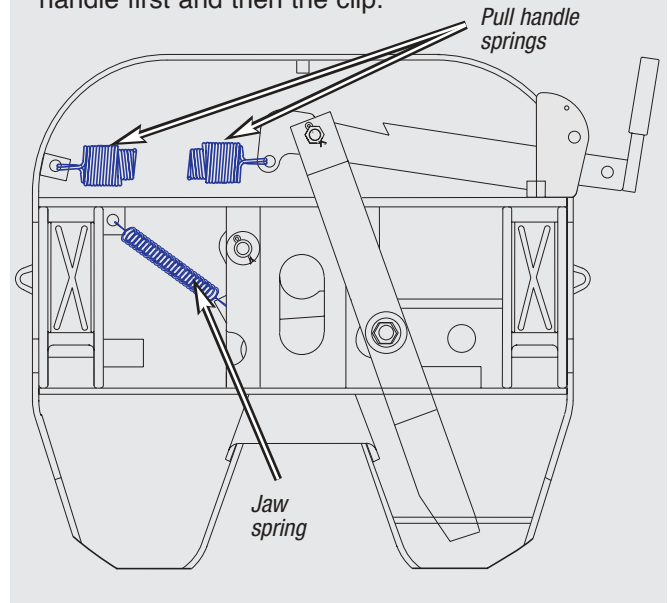
CUSTOM DUTY REBUILD ASSEMBLY

Before rebuilding the assembly, check to make sure that there are no cracks in the cross members or other components. Also check bracket pin holes to ensure they are not worn oversize (pins should fit snugly).

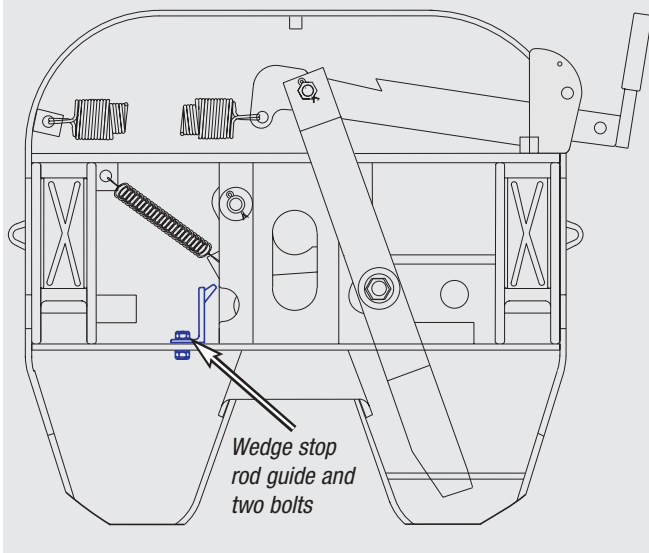
- 5** Insert the pull handle into the top plate. Attach the operating handle to the pull handle using a new bolt assembly (items 10, 13 & 21). Do not over tighten nut (item 21).



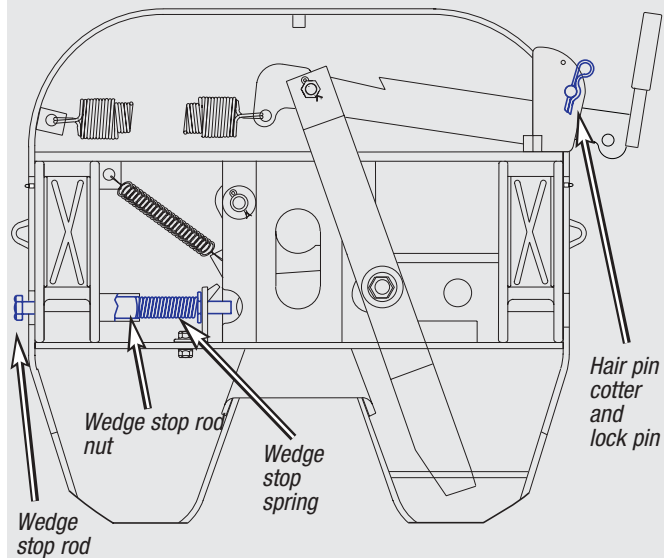
- 6** Attach the jaw spring to the jaw and the double springs to the pull handle. It is easier to attach the double springs to the handle first and then the clip.



- 7** Attach the wedge stop rod guide to the rear cross member using the two new bolts. DO NOT OVER TIGHTEN BOLTS. LUBRICATE ALL PIVOT POINTS

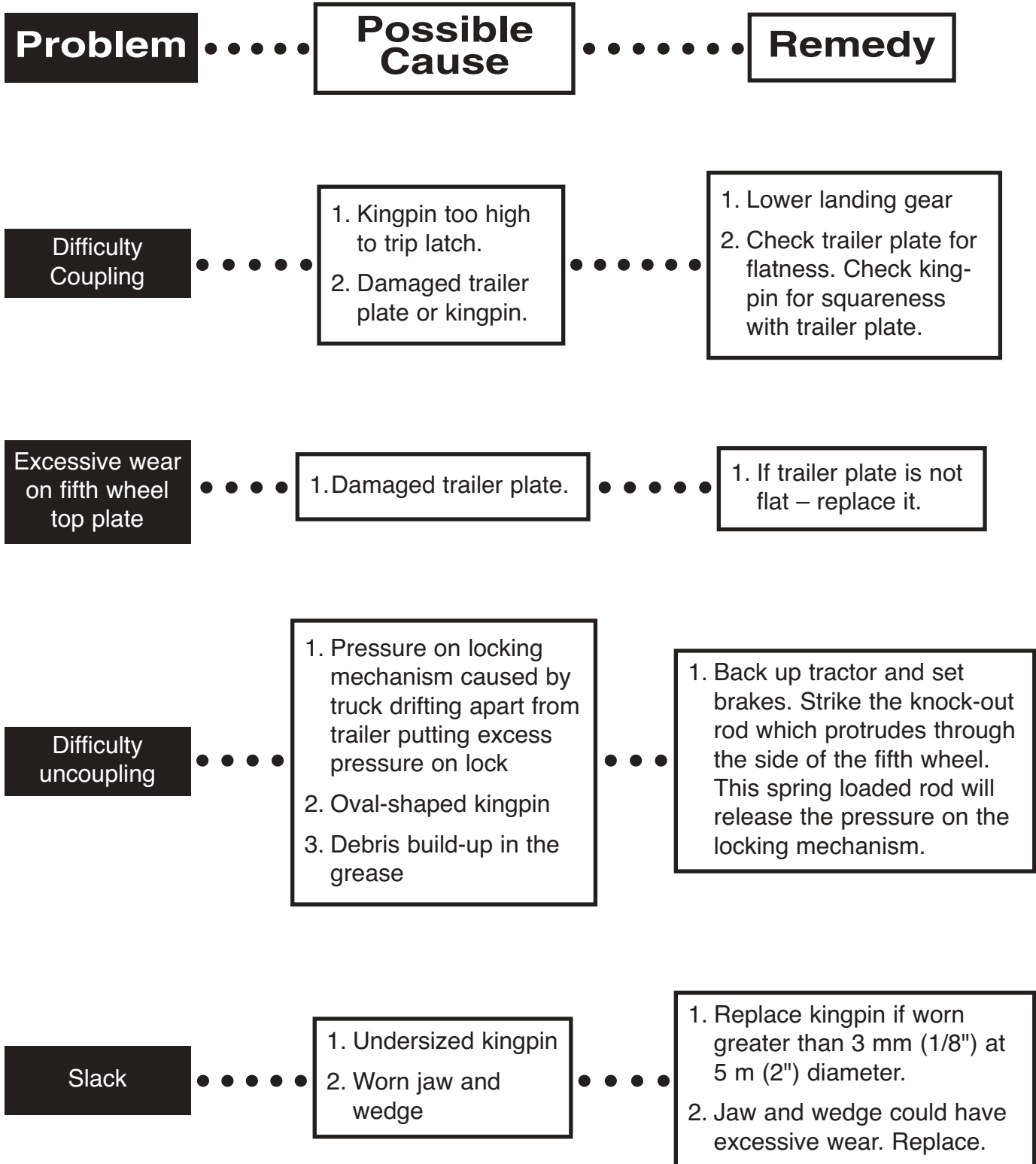


- 8** Insert the wedge stop rod nut into the nut retainer. Hold nut in place and thread the wedge stop rod through nut, spring and wedge stop rod guide. Open the fifth wheel, insert a 2" king pin and close fifth wheel. Adjust the wedge stop rod to $\frac{3}{8}$ " from the end of the wedge. Open and close at least twice. Wheel should operate freely and smoothly without binding or interference. AFTER COUPLING TO A TRAILER OR TO A 2" KING PIN INSERT THE LOCK PIN AND SECURE WITH HAIR PIN COTTER.



Under no circumstances should a fifth wheel be repaired or used if any component (cross member, saddle bearing, etc.) is cracked.

CUSTOM DUTY REBUILD TROUBLESHOOTING



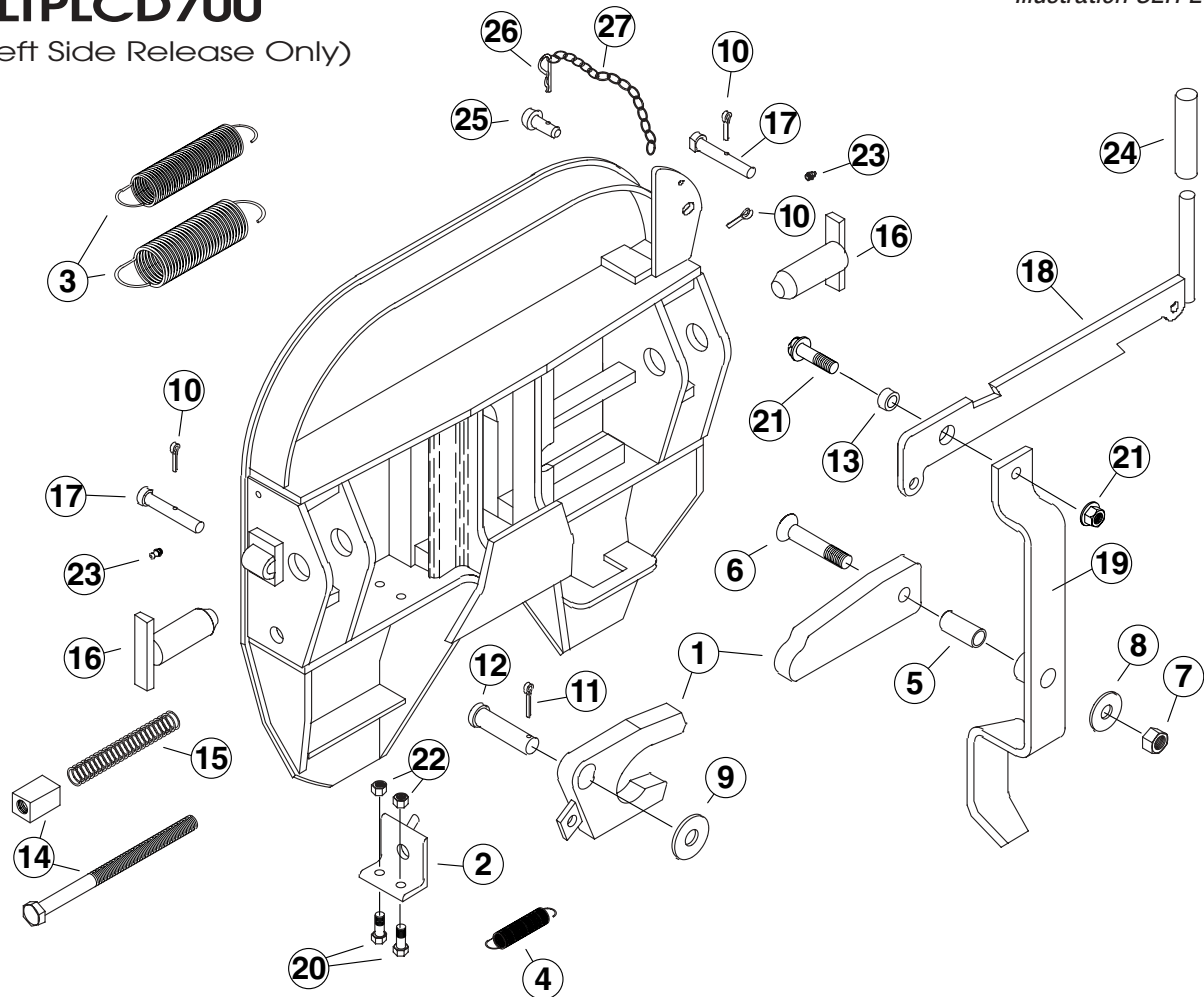
Note: All fifth wheel installations must be approved by Fontaine Fifth Wheel.

CUSTOM DUTY REBUILD DIAGRAM

SLTPLCD700

(Left Side Release Only)

Illustration SLTPLCD700



Item No.	Description	Part Number (Quantity)
①	Jaw and Wedge Set	CD-WED-213-214 (1)
②	Wedge Stop Rod Guide	CD-RGD-221 (1)
③	Pull Handle Spring Set	CD-SPR-227-228 (1)
④	Jaw Spring	CD-SPR-236 (1)
⑤	Bushing	CD-BSH-237 (1)
⑥	Flat Head Socket, 5/8"-11 x 3-1/2", Grade 5	BLT-301-19 (1)
⑦	Hex Lock Nut, 5/8" -11, Grade "B"	NUT-303-3 (1)
⑧	Flat Washer, 5/8", Plain	WSH-304-5 (1)
⑨	Flat Washer 3/4", Plain	WSH-304-8 (1)
⑩	Cotter Pin, 3/16" x 1"	PIN-165 (3)
⑪	Cotter Pin, 5/32" x 1"	PIN-306-3 (2)
⑫	Clevis Pin, 3/4" x 3"	PIN-307-1 (1)
⑬	Bushing, 7/16"	BSH-115 (1)
⑭	Wedge Stop Rod w/ Nut	CD-ROD-234 (1)

Item No.	Description	Part Number (Quantity)
⑮	Wedge Stop Rod Spring	CD-SPR-315 (1)
⑯	Bracket Pin	CD-PIN-224 (2)
⑰	Bracket Retainer Pin	PIN-124 (2)
⑱	Pull Handle	CD-HAN-225 (1)
⑲	Operating Handle	CD-OPR-226 (1)
⑳	Hex Head Bolt, 3/8" -16 x 1", Grade 2	BLT-302-1 (2)
㉑	Hex Head Flanged Bolt, also includes Flanged Nut, 1/2" -13 x 2", Grade 5	BLT-302-70 (1)
㉒	Hex Lock Nut, 3/8" -16, Grade 5	NUT-303-1 (2)
㉓	Grease Fitting	MSC-375 (2)
㉔	Handle Grip	PUL-GRIP (1)
㉕	Lock Pin	PIN-331 (1)
㉖	Hair Pin Cotter	PIN-336-1 (1)
㉗	Chain	CD-SCD-337 (1)

CD 700 CUSTOM DUTY PARTS & ASSEMBLIES LIST

CD700 MODEL

Assemblies

Part Number	Description	Total Weight (lbs.)
SLCD7FM5750*	CD700 with bracket for stationary mounting	174.0
SLCD7PA6125	CD700 with a 6.125" plate mount.	206.0
CD7AWB675024.	CD700 with a 6.75 air slide bracket and 24" slide rail.	518.0

Kits

Part Number	Description	Total Weight (lbs.)
KIT-RPR-S500	Repair Kit	7.0
KIT-CD-ROD	Wedge Stop Rod Kit	1.0
KIT-CD-STOP	Stop Rod Guide Kit	1.0
KIT-CD-HDL	Operating and Pull Handle Kit	9.0
KIT-CD-PIN-224	Bracket Pin and Bushing Kit.	4.0
KIT-CD-LOCK-PIN	Lock Pin & Chain Kit	3.0

Replacement Parts

Part Number	Description	Total Weight (lbs.)
SLTPLCD700	CD700 Replacement Fifth Wheel Top Plate	135.0
BKTCPLT	Bracket for the SLCDPA6125.	70.0
BKTC*	Bracket for the SLCD7FM5750	38.0
CDBKTAWB6PT	CD Air Slide Bracket 6.75" Height	264.0
CDASYAWB624	6.75" CD AWB bracket with a 24" CD slide rail.	382.0
CDSL24B	24" CD Slide Rail	118.0
CYL-5AWB-1	AWB Air Cylinder	6.2
LOC-669	Locking Wedge (pair)	7.0

Replacement Parts (sold in case quantities only)**

Part Number	Description	Qty. Per Case	Total Weight (lbs.)
BLT-301-19	Flat Head Socket, 5/8"-11 x 3-1/4", Grade 5	10	2.5
BSH-115	Bushing, 7/16"	25	2.0
CD-SPR-236	Timer Spring	6	0.4
NUT-303-1	Hex Lock Nut, 3/8" - 16, Grade "B"	25	1.6
NUT-303-3	Hex Lock Nut, 5/8" - 11, Grade "B"	25	1.8
PIN-124P	Bracket Retainer Pin (Pair)	6 Pairs	2.5
PIN-307-1	Clevis Pin, 3/4" x 3"	20	10.0
PIN-331	Lock Pin	20	1.3

* Some welding is required.

** These parts are shipped direct from Fontaine International in case quantities only. They may be available in individual quantities from your local distributor/ dealer.



Fontaine International, Inc. • World Wide Headquarters • 5000 Grantswood Road • Irondale, AL 35210
 800-874-9780 • Fax: 205-421-4400
www.fifthwheel.com